

Compatibility paper for Bluetooth barcode and RFID scanners

- BaracodaPencil
- BL1000
- 2604 Family
- BCM2604 Family
- RoadRunners Family
- IdBlue Juin 2005 1/5

Important Notice

Baracoda products works with every Bluetooth devices accepting both SPP connection and “sniff mode”. Some Bluetooth products available on the market do not support the “sniff mode” (low power consumption mode) as specified. You should not use such product with your barcode scanner to plenty benefit of great capabilities of Baracoda barcode scanners.

For best usage of your barcode scanner, Baracoda provides several hardware and software solutions. For most common platforms (PC, PDA, Mobile phones), Baracoda provides two software to be used depending of your system. Please check our compatibility table in order to know which of the “BaracodaManager” or the “KEmul” software to download. APIs available for developers.

Differences between Baracoda Manager and KEmul

KEmul inserts the scanned barcode value in a field that you select in your application program. It allows to add a prefix and a suffix. KEmul can be used as a stand alone program or as a plugin with BaracodaManager.

To use KEmul as a stand alone program, follow these steps:

1. Create a SPP connection using your Bluetooth software (note COM port number associated),
2. Open KEmul and select associated COM port number, then start.
3. Open your application software and select field
4. Scan barcode

BaracodaManager handles all Bluetooth related tasks as well as all products settings. We highly recommend to use the BaracodaManager software for an optimum usage of your product. For more information about BaracodaManager, please visit www.baracoda.com.

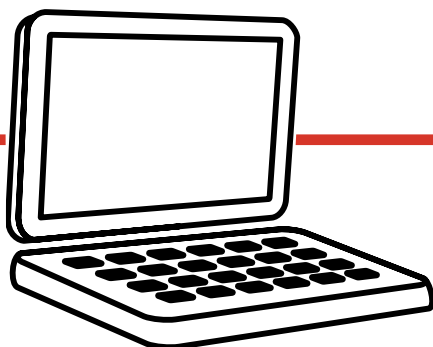
Developers:

Baracoda can provide APIs for all platforms compatibles with BaracodaManager.

POS users and users replacing a serial barcode scanner on any platform:

If you use your Baracoda Barcode Scanner with a Baracoda Serial Dongle (RS232) or USB Plug&Scan you do not need any additional software, as all necessary software is embedded in the dongle.

All other users refer to your platform:



**PC & Laptop & TabletPC:
OS: Windows 2000 & XP**

Bluetooth Stack:

- Widcomm 1.2.2.9 & following (except from 1.3.0 to 1.3.2.7 and the stack 1.3.2.19 and 1.4.3.4) till 3.0.x.x and Broadcom Widcomm 4.0 and following: Use BaracodaManager or Baracoda Plug&Scan offer.
- Widcomm 1.2.2.8 & previous (and from 1.3.0 to 1.3.2.7): Use Kemul or ask your vendor to provide you more recent driver or use Baracoda Plug&Scan offer.
- Microsoft : Use BaracodaManager or Baracoda Plug&Scan offer.
- any other : Use Baracoda Plug&Scan offer or Kemul.

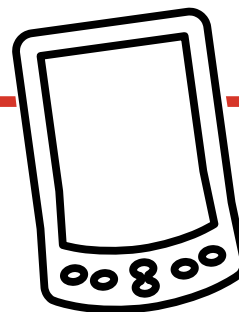
All the Bluetooth embedded PCs and Tabletpc from Sony, Acer, the tablet GoBook from Itronix, the toughbook CF18 from Panasonic and all TabletPCs from HP are turning on the Widcomm stack. Moreover, Baracoda Manager is perfectly working on every PC (Windows 2000 & XP) with the Baracoda USB Dongle.

Please consider also using Baracoda Plug&Play offer (no software installation needed):

- Baracoda RS232 dongle working on every PC (also DOS, MAC...) with a RS232 port available.
- USB Plug&Scan working on every PC (not Win98).

PDA & TabletPC

**OS : WinCE; PocketPC 2000; PocketPC 2002;
PocketPC 2003; Palm OS; WinCE.NET**



For **WinCE** and **PocketPc 2000**: Use Kemul

PPC2002/2003:

Widcomm Broadcom Bluetooth Stack:

Driver HP/Compaq: Use BaracodaManager

Widcomm 1.0.0.11 & following or Broadcom 1.0: Use BaracodaManager

Widcomm 1.0.0.10 & previous: Use Kemul or ask your vendor to provide you more recent driver

All other stacks: Use Kemul

Baracoda assures compatibility of the BaracodaManager on the following hardware: all Bluetooth PDAs from HP Ipaq, the DELL Axim X30 & X50, the Fujitsu-Siemens Pocket Loox 410, Qtek9090, the MDA3, XDA3. All PDA PocketPC 2002/2003 with the Baracoda CompactFlash

PPC2002/2003:

Microsoft Bluetooth Stack:

Use BaracodaManager

The Qtek2020, the MDA2, the XDA2, the last version of the Intermec700, the last version of GeoXT from Trimble are turning on the Microsoft Bluetooth Stack

Palm OS

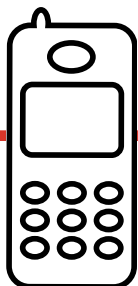
Baracoda Barcode devices and Baracoda API for Palm are fully compatible with Palm Bluetooth software. Baracoda provides a Palm version of the BaracodaManager for testing purpose as well as all the required information for developers to integrate Baracoda scanners in your application program using Baracoda API.

BaracodaManager and Baracoda API are fully compatible with Tungsten T, T2, T3, T5 and the Zire72 Bluetooth (not compatible with the Idblue).

For Win CE.NET platforms:

We do have the ability to give a BaracodaManager for that platform, but we can not have a generic version as it will depend of the Hardware itself. So if you wish BaracodaManager for that platform: we'll compile and test the version «on demand». There will be some extra cost. We require that the client loan us the device that will run the software for a full week.

Please find on Baracoda website a special BaracodaManager version for each of the following products: Psion NetBookPro, WorkAboutPro, Psion 7535, Intermec CK30, Siemens Mobic T8 and Skeyepad.



Mobile Phones

Baracoda provides BaracodaManager for:
Symbian 6.1
Symbian 7
Smartphone: PPC 2003
Java (JSRB2) : beta versions available

Baracoda already tested with **Nokia 7650** (except BL1000), **Nokia 3230/6681/3650/3600/3660/3620**, **Nokia 6600** (compatible with BL1000 from the Nokia firmware version 5.27.0), **Sony Ericsson P900/910** (except BL1000), the **Siemens SX1**, the **Otek2020/9090**, **XDA2/3**, and **MDA2/3**.

Baracoda provides beta versions of the java version of its BaracodaManager. Ask your vendor for more information.

Demo versions available on request for: **Motorola i605**, **Sony Ericsson P800/900/910**, **Nokia serie 8** (9300/9500) and serie 6 (3230-6260-6600-6620-6630-6670-6680-6681-6682-7610), **Blackberry**.

What is an SPP connection (SPP Profile)?

Bluetooth allows different kinds of connections (each of them optimising one specific task). Some of these connections are: SPP, PAN, DUN, Networking, File Transfert, HRCPP... The SIG consortium doesn't oblige manufacturers to have all these different profiles in every Bluetooth device, but the SIG obliges that, if a profile is implemented in a device, this must be compatible with any other device with that same profile: be careful and always check which profiles are available in a Bluetooth card or Bluetooth USB Dongle you would like to buy.

What is a stack ?

A Bluetooth device, from an architectural point of view, is a pile of different protocol layers. The architectural protocol layers of a Bluetooth wireless communication system, comprising the Host Control Interface (HCI), Logical Link Control and Adaptation Protocol (L2CAP), RS232 Serial Cable Emulation Profile (RFCOMM), Service Discovery Protocol (SDP), and Object Exchange (OBEX) are commonly called "stack"

So Bluetooth is a standard but every manufacturer is working on a particular “stack”, sometimes proprietary.

The most common stack is the Widcomm stack.

How do I check the version of the stack ?

Ask your vendor or right click on the Bluetooth logo of your device (for PC and PDA). Go on properties and you will find out on which stack your device is turning and what is the version of that stack.

Differences between Baracoda Manager and KEmul

KEmul inserts the scanned barcode value in a field that you select in your application program. It allows to add a prefix and a suffix. KEmul can be used as a stand alone program or as a plugin with BaracodaManager.

To use KEmul as a stand alone program, follow these steps:

5. Create a SPP connection using your Bluetooth software (note COM port number associated),
6. Open KEmul and select associated COM port number, then start.
7. Open your application software and select field
8. Scan barcode

BaracodaManager handles all Bluetooth related tasks as well as all products settings. We highly recommend to use the BaracodaManager software for an optimum usage of your product. For more information about BaracodaManager, please visit www.baracoda.com.